



22

15



**F E A T U R E S**

(Click on titles to download articles.)

**15 An MS Awareness Roundtable**

March 5–11 is our second national MS Awareness Week. We asked six people with widely different MS experiences to talk about how MS awareness affects them—at home, in the neighborhood, and at work.

**22 Teams Take to the 2007 MS Walk**

Walking as a team is taking the nation! Hardy and inventive volunteers raise funds and show the public that people care about MS.

BY ROCHELLE KRAUT

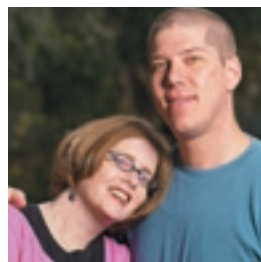
**44 Stem Cells and MS: What the investigators see**

The Society hosted an international meeting in San Francisco this January—where top scientists discussed the prospects and the problems involved in harnessing the power of stem cells to repair MS damage. Research in this area offers hope to those with progressive MS.

BY MARTHA KING

**48 Stem Cells: Some basic definitions**

44



◀ **COVER:** Jennifer and Jayson Smith, both diagnosed with MS in 2004, formed a Walk team (Gooverhead) after they were married. Last year they added some attitude to their team shirts: the Latin/Greek phrase “carpe pathos” – seize the disease. (See page 22.) Photo by Jay Carlson.



50



54

The magazine for Members of the National MS Society

February–March 2007

Volume 25, Number 1

(Click on titles to download articles.)

## C O L U M N S

## D E P A R T M E N T S

### 10 inbox

### 28 news

A victory for MS mobility; MS pill “fast-tracked” by FDA, other pills in trials; lack of training hurts doctor-patient relationships; a hopeful clue for resistant MS



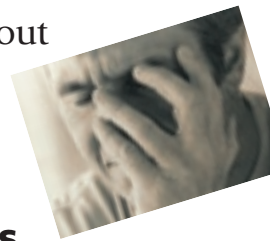
### 32 nationalMSsociety

MS activists follow the money trail; Society awarded major grant to strengthen marriages; supermodel helps MS Bike Rides; Society study shows discrimination still rife; new on our Web site; new for professionals; MS awareness and you

### 7 headsup

### 41 Iwantyoutoknow

What research is doing about symptoms that can't be measured easily  
by John Richert, MD



### 50 fightingforchanges

Activists unite to develop options in long-term care  
by Marcella Durand

### 54 shrewdmoves

Plan smart for the long term: Medicaid changes you should know  
by Sandra Grance

### 58 letmetellyou

... about living with MS in India  
by Rajiv Virat

### 62 onmymind

Joyce Nelson, Society president and CEO, is thinking about Hula Hoops®, Beatles, and very BRITE light



## InsideMS Editorial Advisory Board

Deborah Miller, PhD,  
chair

Department of Neurology  
Mellen MS Center  
Cleveland Clinic  
Cleveland, OH

Pat Bednarik, MS,  
CCC-SLP, MSCS  
University of Pittsburgh  
MS Clinic  
Pittsburgh, PA

Susan Bennett, PT, EdD,  
NCS, MSCS  
Clinical Associate Professor  
Neurology  
State University of New York  
at Buffalo  
Buffalo, NY

Cindy Gackle, OTR/L  
Fairview University Medical  
Center  
Minneapolis, MN

George Garmany, MD,  
FAAN  
Associated Neurologists of  
Boulder, PC  
Boulder, CO

Andrew D. Goodman, MD  
Chief, Neuroimmunology Unit  
University of Rochester  
Rochester, NY

Linda Guiod, RN  
Vice President of Chapter  
Programs  
Central New England Chapter  
National MS Society  
Waltham, MA

Robert N. Herman  
Senior Advocacy Attorney  
Paralyzed Veterans of America  
Washington, DC

Patricia Kennedy, RN, CNP  
Nurse Practitioner  
Rocky Mountain MS Center  
Englewood, CO

D. Joanne Lynn, MD  
Associate Professor of  
Neurology  
Ohio State University  
Columbus, OH

Trena Pelham, MD  
Member, National Programs  
Advisory Council  
Philadelphia, PA

J. Theodore Phillips, Jr., MD  
Director, MS Center at Texas  
Neurology PA  
Dallas, TX

Bernice Schacter, PhD  
Research Advocate  
Delaware Chapter  
National MS Society  
Wilmington, DE

Aaron Miller, MD,  
ex officio  
Chief Medical Officer  
National MS Society

InsideMS is published bi-monthly by the  
**National Multiple Sclerosis Society**

733 Third Avenue  
New York, NY 10017-3288

Tel: 212-986-3240

Info: 1-800-FIGHT-MS [1-800-344-4867]

InsideMS is online: [nationalmssociety.org](http://nationalmssociety.org)

CHAIRMAN  
OF THE BOARD  
Weyman Johnson

EDITOR  
Martha King

DESIGN AND PRODUCTION  
Bruce Tobin  
The Magazine  
Group, Inc.  
Washington, DC

PRESIDENT AND CEO  
Joyce Nelson

MANAGING EDITOR  
Gary Sullivan

ASSOCIATE EDITOR  
Rochelle Kraut

ADVERTISING SALES  
DIRECTOR  
Fred Flanders  
303-813-6618

©2007 National Multiple Sclerosis Society. ISSN 0739-9774

InsideMS is available in microform from Bell & Howell  
Information and Learning (formerly University Microfilms,  
Inc.), Ann Arbor, Michigan 48106-1346.

The Society participates in a donor list exchange  
program with other organizations. The names are  
exchanged on condition that participating organi-  
zations send only one piece of mail and will not  
add names to their lists unless they receive a gift.

If you are a donor and do not want to be included,  
send your name and address to National MS  
Society, Department OO, P.O. Box 4444,  
Pittsfield, MA 01202-4444.

### 2006 Awards for InsideMS



**The APEX Award for Publication Excellence, Feature Writ-  
ing category, "Emergencies Happen!"** (June–July 2005)

**The APEX Award for Publication Excellence, Regular  
Departments & Columns category, "Let Me Tell You ... About  
My Tysabri Experience"** (August–September 2005)

**National Health Information Award, Silver Award, Patient  
Education Information, "Emergencies Happen"** (June–July  
2005)

**National Health Information Award, Silver Award, Patient  
Education Information, "Are You Ready for the Changes in  
Medicare?"** (October–November 2005)

**National Health Information Award, Bronze Award,  
Patient Education Information, "MS As a Spiritual Journey"**  
(January–March 2005)

The Society does not endorse products,  
services, or manufacturers. Such names appear  
here solely because they are considered  
valuable information. The Society assumes no  
liability for the use or contents of any product  
or service mentioned.